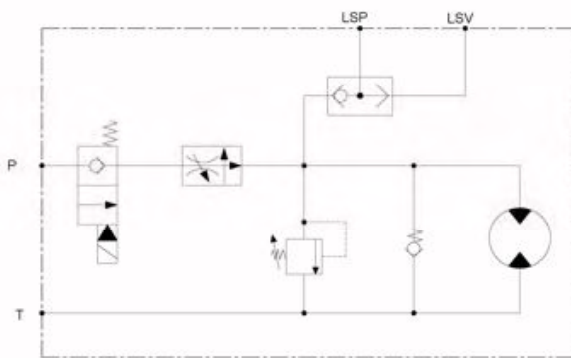
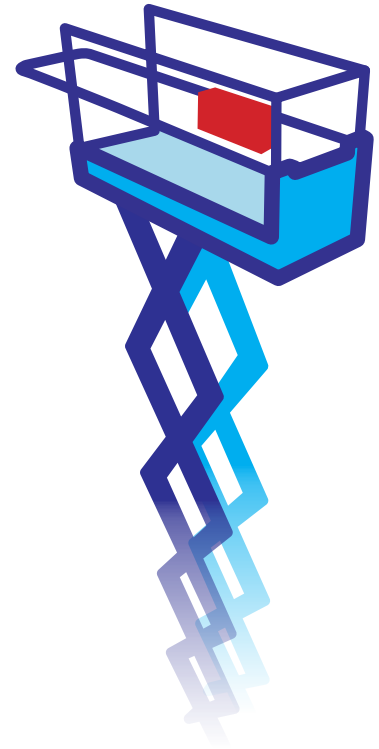
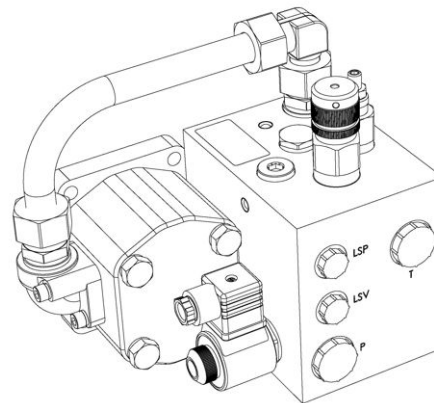


The HPS Platform PowerPack for Variable Displacement Hydraulic Systems



Variable Displacement Platform PowerPack Schematic



The UKG Platform Powerpack is a purpose built onboard hydraulic generator solution, designed specifically for the Powered Access Industry. The unit shown above is suited to an extensive range of Scissors and Booms that operate with variable displacement load sensing pumps.

The manifold incorporates all of the required valves to allow the generator to operate without the need for any other component parts. It incorporates a 12v on/off solenoid valve, pressure relief valve, pressure compensated flow control and integral shuttle valve for load sensing purposes. To install, it is necessary to tee into the existing pressure line and connect the hydraulic flow from the pressure line into the P port of the manifold block and then connect a return to tank line from T port. The existing load sense line from the platform is then connected into LSV on the manifold and connected back from LSP to the pump, this completes the connections for the hydraulic circuit.

Platform Power Pack

The electrical connections involved provide a 12v supply to the coil on the solenoid valve via a toggle switch mounted in the control panel in the basket. In the wiring loom of the platform you will usually find somewhere to connect it to the existing circuit. For further technical help you should consult either your workshop manual or contact the platform manufacturer for further instructions.

The AC power cable from the alternator is connected to the RCBO, which is a combined Earth Leakage Circuit Breaker and Miniature Circuit Breaker. This provides protection both to the operator in the event of an earth fault and to the unit in the event of overload. It should be installed as close to the output cable of the alternator as possible in order to ensure that the power cable running through the scissor or boom is protected throughout its entire length. The power cable to the basket will then need to be connected into an appropriate electrical socket or sockets mounted on the deck or basket, into which the operator will plug in their tools or equipment. When installing the toggle switch it is necessary to ensure that when the switch is turned on that the functions of the platform are isolated, again many platforms are already configured in such a way or can be programmed accordingly. The load sense shuttle valve incorporated into the manifold will, in its default state monitor the load sense line from the functions of the platform and signal back to the pump out of LSP, when the generator is turned on there will be no load sense from the platform functions and the generator load sense line will pressurise and signal back to pump accordingly.

The generator can be mounted in any convenient location, is fully weather proof and can be mounted vertically if required.

Units can be supplied in a range of outputs from 2 – 6 kVa, single or three phase, 50 and 60 Hz as well as a range of welder / generators. One of the key advantages of the UKG Platform Powerpack is that within this range the manifold and valves are common on all units. The units are virtually maintenance free and come with a two year warranty as standard on parts and labour.

